

QUANTOFIX® Calcium

Pack content:

1 aluminum container with 60 test strips

1 bottle Ca²⁺-1

1 bottle Ca²⁺-2

1 measuring vessel with 5 mL mark

1 small measuring spoon

Measuring range:

10–100 mg/L Ca²⁺

Color gradation:

0 · 10 · 25 · 50 · 100 mg/L Ca²⁺

Safety precautions:

Reagent Ca²⁺-1 contains hydrogen peroxide urea 20–100 % CAS 124-43-6. Reagent Ca²⁺-2 contains sodium hydroxide solution 20–55% CAS 124-43-6. DANGER Causes severe skin burns and eye damage. Do not breathe vapors. Wear protective gloves / eye protection. IF SWALLOWED: rinse mouth. Do NOT induce vomiting. IF ON SKIN (or hair): Remove / Take off immediately all contaminated clothing. Rinse skin with water / shower. IF INHALED: Remove to fresh air and keep at rest in a position comfortable for breathing. IF IN EYES: Rinse cautiously with water for several minutes. Remove contact lenses, if present and easy to do. Continue rinsing. For further information, please ask for safety data sheet (see www.mn-net.com/MSDS).

General indications:

Remove only as many test strips as are required. Close the container immediately after removing a strip. Do not touch the test field.

Instructions for use:

1. Rinse the measuring vessel with the test solution and fill it to the 5 mL mark.
2. Dip the test strip into the test solution for 1 second.
3. Shake off excess liquid.
4. Place test strip aside with test field facing upwards.
5. Add 1 measuring spoon Ca²⁺-1 to the sample.
6. Shake carefully.
7. Add 10 drops Ca²⁺-2 to the sample.
8. Shake carefully.
9. Pick up the test strip again.
10. Dip the test strip again into the test solution for 45 seconds.
11. Shake off excess liquid.
12. Compare with the color scale.

Interferences:

The following ions interfere with the determination when in higher concentrations:
> 1000 mg/L: Al³⁺, As³⁺, NH₄⁺, Sb³⁺, K⁺, Na⁺, Bi³⁺, Br⁻, Cl⁻, CN⁻, CrO₄²⁻, [Fe(CN)₆]³⁻, [Fe(CN)₆]⁴⁻, I⁻, NO₂⁻, NO₃⁻, PO₄³⁻, SCN⁻, S₂O₅²⁻, acetate, ascorbate, citrate, tartrate
> 500 mg/L: Ba²⁺, Mg²⁺; > 250 mg/L: Sr²⁺; > 100 mg/L: MnO₄⁻

The following heavy metals interfere when the concentrations below are exceeded:

> 100 mg/L: Mn²⁺, > 50 mg/L: Ni²⁺, > 25 mg/L: Fe²⁺, Fe³⁺, Pb²⁺, > 10 mg/L: Cr³⁺, Co²⁺, Cu²⁺, Hg²⁺, Zn²⁺

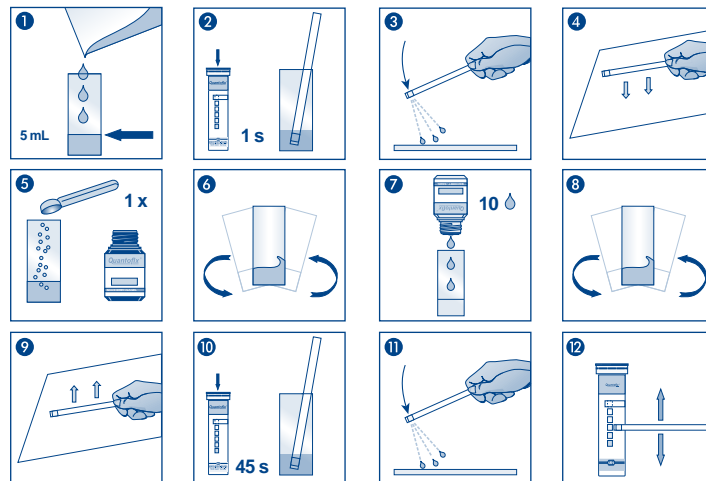
Disposal:

The used analysis specimens can be flushed down the drain with tap water and channeled off to the local sewage treatment works. Used test strips can be disposed in household waste.

Storage:

Avoid exposing the strips to sunlight and moisture. Keep container cool and dry (storage temperature not above +30 °C).

If correctly stored, the test strips may be used until the use-by-date printed on the packaging.



Product data and ordering information

Type	Semi-quantitative test strips
Presentation	Tube of 60 test strips with reagents
Color reaction	yellow to red
Gradation	0 · 10 · 25 · 50 · 100 mg/l (ppm) Ca ²⁺
REF	91324