

QUANTOFIX® Chlorine dioxide 3000

Description:

QUANTOFIX® chlorine dioxide 3000 are test strips for the semi-quantitative detection of chlorine dioxide (ClO_2) in aqueous solutions. It is used as a highly effective disinfectant for drinking water treatment, wastewater deodorization and in food production. The use of chlorine dioxide, in contrast to "free chlorine" (HClO , ClO^-), largely prevents the formation of harmful haloforms. This test enables the selective detection of chlorine dioxide even in the presence of up to 1000 ppm free chlorine.

Pack content:

1 aluminum container with 100 test strips

Measuring range:

10–3000 mg/L ClO_2

Color gradation:

0 · 10 · 25 · 50 · 100 · 250 · 500 · 1000 · 1500 · 2000 · 2500 · 3000 mg/L ClO_2

Reaction principle:

Chlorine dioxide reacts with organic redox indicator systems to form dark green (test field 1) or brown-black (test field 2) oxidation products.

Hazard warnings:

This test does not contain hazardous substances that must be labelled.

General indications:

Remove only as many test strips as are required. Close the container immediately after removing a strip. Do not touch the test fields.

Instructions for use:

1. Immerse test strip in sample for 2 s.
2. Shake off excess liquid.
3. Wait 10 s
4. and compare both test fields *immediately* with the color scale.

Interpretation:

If chlorine dioxide is present, the first test field at the end of the strip turns green and the second turns brown-black starting at a concentration of 1500 mg/L. Discolorations after the reaction time should no longer be taken into consideration for the interpretation.

Interferences:

The test may be impaired by strong oxidants (such as halogens, halogen oxides, peracids, inorganic peroxides). The following substances do not lead to any false-positive color reaction at the concentrations indicated:

40000 mg/L: H_2O_2

1000 mg/L: ClO^-

The following substances – up to the indicated concentration – do not interfere with the test (at 0 and 500 mg/L ClO_2):

1500 mg/L: Ca^{2+} (~200°dH), Mg^{2+} (~350°dH), Na^+ , Cl^- , NO_3^- , PO_4^{3-} , SO_4^{2-}

Additional information:

The test strip container stopper contains a non-toxic drying agent. If swallowed, drink plenty of water.

Disposal:

Information regarding disposal can be found in the safety data sheet. You can download the SDS from www.mn-net.com/SDS.

Storage:

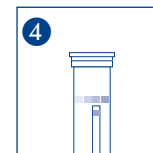
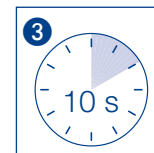
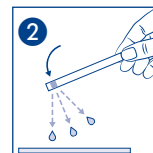
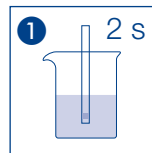
Avoid exposing the strips to sunlight and moisture. Keep container cool and dry (storage temperature 4–30 °C).

If correctly stored, the test strips may be used until the use-by-date printed on the packaging.

Literature:

Küke, F. "Chlordioxid in der Trink- und Prozesswasserbehandlung", Nachrichten aus der Chemie, 2010, 48, 544-546

U.S. Patent No. 11,371,973



CTL SCIENTIFIC SUPPLY CORP. 1016-3 Grand Boulevard, Deer Park, NY 11729

Tel: 631-242-4249

Web: www.ctlscientific.com

Manufacturer: Macherey-Nagel GmbH & CO. KG

Rev: 2025-03