

QUANTOFIX® Chlorine 500

Description:

QUANTOFIX® Chlorine 500 are test strips for the semi-quantitative determination of the chlorine content in the concentration range of 25–500 mg/L in aqueous solutions.

Pack content:

1 aluminum container with 100 test strips

Measuring range:

25–500 mg/L chlorine

Color gradation:

0 · 25 · 50 · 100 · 250 · 500 mg/L chlorine

Reaction principle:

Chlorine reacts with organic redox indicator systems to form blue-green to orange-brown oxidation products.

Hazard warnings:

This test does not contain hazardous substances that must be labelled.

General indications:

Remove only as many test strips as are required. Close the container immediately after removing a strip. Do not touch the test field.

Instructions for use:

1. Immerse test strip in sample for 1 s.
2. Shake off excess liquid.
3. Wait 10 s
4. Compare test field immediately with the color scale.

Interpretation:

If chlorine is present, the test field will turn blue-green to orange-brown. Discolorations after the reaction time should no longer be taken into consideration for the interpretation.

Interferences:

The test also yields a positive result in the presence of powerful oxidizing agents (bromine, iodine, hydrogen peroxide). The determination of chlorine is not impaired by the following maximum foreign substance concentrations:

1000 mg/L Al^{3+} , Ca^{2+} , Cr^{3+} , NO_3^- , SO_4^{2-}

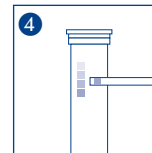
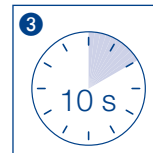
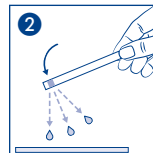
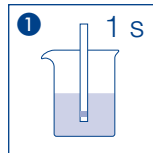
750 mg/L Cl^- , 500 mg/L Cu^{2+} , 150 mg/L Fe^{3+} , 100 mg/L NO_2^- , 50 mg/L CN^- , 25 mg/L NH_2Cl , 10 mg/L $\text{Cr}_2\text{O}_7^{2-}$ and 5 mg/L S^{2-}

Disposal:

Information regarding disposal can be found in the safety data sheet. You can download the SDS from www.mn-net.com/SDS.

Storage:

Protect test strips from sunlight and moisture. Store tin in a cool and dry location (storage temperature 4–30°C). If stored properly, the test strips can be stored until the printed expiry date.



CTL SCIENTIFIC SUPPLY CORP. 1016-3 Grand Boulevard, Deer Park, NY 11729

Tel: 631-242-4249

Web: www.ctlscientific.com

Manufacturer: Macherey-Nagel GmbH & CO. KG

Rev: 2025-03