

# QUANTOFIX® Chloride

## Pack content:

1 aluminum container with 100 test strips

## Measuring range:

0–3000 mg/L Cl<sup>-</sup>

## Color gradation:

0 · 500 · 1000 · 1500 · 2000 · 3000 mg/L Cl<sup>-</sup>

## General indications:

Remove only as many test strips as are required. Close the container immediately after removing a strip. Do not touch the test fields.

## Additional indications:

If the sample solution has a pH value of 2–12, the reaction will take place without interferences. Strongly acid solutions must be buffered with caustic soda, and alkaline solutions with nitric acid to a pH of 5–7. If the test strip shows a value of 3000 mg/L, the concentration of chloride ions may actually be higher. In this case, we recommend carrying out a stepwise dilution of the sample with distilled water in a ratio of 1:5, to bring the chloride content into the measuring range of the test paper. The test fields may change after the reaction time has elapsed. This has no relevance for the reading and does not indicate any malfunction of the test strip.

## Instructions for use:

1. Dip the test strip with all test fields into the test solution for 1 second.
2. Shake off excess liquid.
3. Wait 60 seconds.
4. Compare with the color scale.

## Interferences:

The following ions interfere with the reading only above the indicated concentrations:

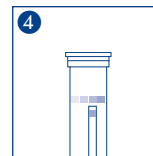
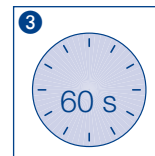
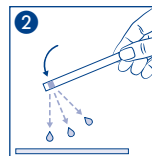
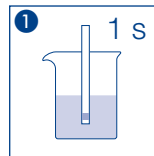
> 1000 mg/L Al<sup>3+</sup>, Ca<sup>2+</sup>, Cd<sup>2+</sup>, Ce<sup>4+</sup>, Cu<sup>2+</sup>, K<sup>+</sup>, Mg<sup>2+</sup>, Mn<sup>2+</sup>, Na<sup>+</sup>, NH<sub>4</sub><sup>+</sup>, Ni<sup>2+</sup>, Pb<sup>2+</sup>, Sn<sup>2+</sup>, Zn<sup>2+</sup>, BO<sub>3</sub><sup>2-</sup>, CO<sub>3</sub><sup>2-</sup>, CrO<sub>4</sub><sup>2-</sup>, NO<sub>2</sub><sup>-</sup>, NO<sub>3</sub><sup>-</sup>, PO<sub>4</sub><sup>3-</sup>, SO<sub>3</sub><sup>2-</sup>, SO<sub>4</sub><sup>2-</sup>, acetate, citrate, oxalate, tartrate, EDTA, > 500 mg/L Fe<sup>2+</sup>, Fe<sup>3+</sup>, > 200 mg/L I<sup>-</sup>, > 100 mg/L Ag<sup>+</sup>, Br<sup>-</sup>, SCN<sup>-</sup>, > 75 mg/L Hg<sup>2+</sup>, > 20 mg/L CN<sup>-</sup>, S<sub>2</sub>O<sub>3</sub><sup>2-</sup>, > 10 mg/L S<sup>2-</sup>, ascorbate.

## Disposal:

Information regarding disposal can be found in the safety data sheet. You can download the SDS from [www.mn-net.com/SDS](http://www.mn-net.com/SDS).

## Storage:

Avoid exposing the strips to sunlight and moisture. Keep container cool and dry (storage temperature 2–8 °C). If correctly stored, the test strips may be used until the use-by-date printed on the packaging.



CTL SCIENTIFIC SUPPLY CORP. 1016-3 Grand Boulevard, Deer Park, NY 11729

Tel: 631-242-4249

Web: [www.ctlscientific.com](http://www.ctlscientific.com)

Manufacturer: Macherey-Nagel GmbH & CO. KG

Rev: 2025-03