

QUANTOFIX® Potassium

Pack content:

- 1 aluminum container with 100 test strips
- 2 bottles Potassium-1
- 2 test tubes

Measuring range:

200–1500 mg/L

Color gradation:

0 · 200 · 400 · 700 · 1000 · 1500 mg/L

General indications:

Remove only as many test strips as are required. Close the container immediately after removing a strip. Do not touch the test field.

Additional indications:

The orange-red coloration of the unused test fields is normal and does not indicate any decomposition of the reagents.

Instructions for use:

1. Place the test tube into the cavity of the thermoformed mold.
2. Add 10 drops potassium-1 (0.7% nitric acid).
3. Dip the test strip into the neutral sample for 1 second.
4. Shake off excess liquid.
5. Place the test strip into the test tube and wait 60 seconds.
6. Shake off excess liquid.
7. Compare test field with the color scale.

If potassium ions are present, the test field turns yellow to orange-red.

Interferences:

Sodium ions in concentrations > 3000 mg/L lead to a fading of the color reaction with corresponding low test results. The following ions in the indicated concentrations do not interfere:
< 1000 mg/L Al³⁺, Ba²⁺, Bi³⁺, Ca²⁺, Fe^{2+/3+}, Mg²⁺, Mn²⁺, Sr²⁺, Zn²⁺
< 200 mg/L NH₄⁺, Hg^{1/2+}, Tl⁺
< 25 mg/L S²⁻

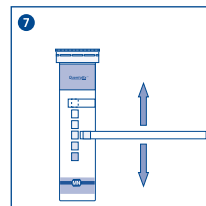
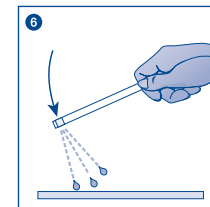
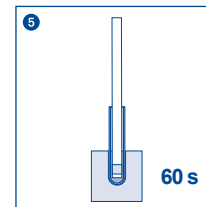
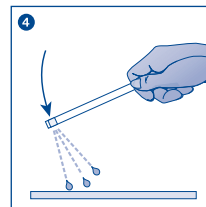
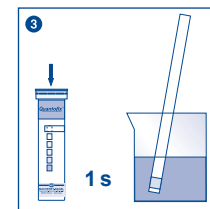
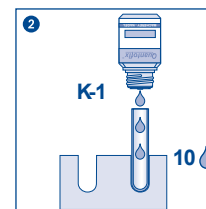
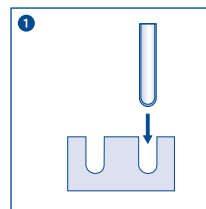
Disposal:

The used analysis specimens can be flushed down the drain with tap water and channeled off to the local sewage treatment works. Used test strips can be disposed in household waste.

Storage:

Avoid exposing the strips to sunlight and moisture. Keep container cool and dry (storage temperature not above +30°C).

If correctly stored, the test kit may be used until the use-by-date printed on the packaging.



Product data and ordering information

| | |
|----------------|---|
| Type | Semi-quantitative test strips |
| Presentation | Tube of 100 test strips with reagents |
| Color reaction | yellow to orange |
| Gradation | 0 · 200 · 400 · 700 · 1000 · 1500 mg/l (ppm) K ⁺ |
| REF | 91316 |