

QUANTOFIX® Copper

Pack content:

1 aluminum container with 100 test strips

Measuring range:

Visually
10–300 mg/L Cu⁺²⁺

Reflectometrically
10–300 mg/L Cu⁺²⁺

Color gradation:

0 · 10 · 30 · 100 · 300 mg/L Cu⁺²⁺

General indications:

Remove only as many test strips as are required. Close the container immediately after removing a strip.
Do not touch the test field.

Instructions for use:

1. Dip the test strip into the sample (pH 2–6) for 1 second.
 2. Shake off excess liquid.
 3. Wait 20 seconds.
 4. Compare test field with the color scale.
- If copper ions are present, the test field turns red-violet.

Interferences:

Strongly acid solutions (pH < 2) have to be buffered to a pH value of 2–6 using solid sodium acetate. Concentrated copper solutions must be diluted to bring the copper content into the measuring range of the color scale. The dilution factor must be taken into account when calculating the content.

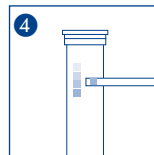
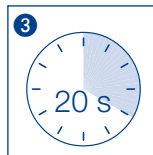
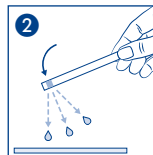
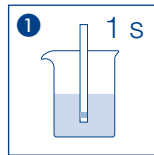
Disposal:

Used test strips can be placed in the normal household waste.

Storage:

Avoid exposing the strips to sunlight and moisture. Keep container cool and dry (storage temperature 4–30 °C).

If correctly stored, the test strips may be used until the use-by-date printed on the packaging.



CTL SCIENTIFIC SUPPLY CORP. 1016-3 Grand Boulevard, Deer Park, NY 11729

Tel: 631-242-4249

Web: www.ctlscientific.com

Manufacturer: Macherey-Nagel GmbH & CO. KG

Rev: 2025-03