

QUANTOFIX® Cobalt

Pack content:

1 aluminum container with 100 test strips

Measuring range:

10–1000 mg/L Co^{2+}

Color gradation:

0 · 10 · 25 · 50 · 100 · 250 · 500 · 1000 mg/L Co^{2+}

General indications:

Remove only as many test strips as are required. Close the container immediately after removing a strip. Do not touch the test field.

Instructions for use:

1. Dip the test strip into the sample (pH 2–7) for 1 s.
2. Shake off excess liquid.
3. Wait 20 s.
4. Compare test field with the color scale.

The test field turns green-blue in presence of cobalt(II) ions.

Interferences:

If the reaction color does not appear on the color scale, larger quantities of foreign ions interfere.

Reaction color brown (copper (II)): the interference is eliminated by addition of a small amount of crystalline sodium thiosulfate to 5–10 mL of the test solution.

Reaction color grey (mercury (I)): the interference is eliminated by addition of a small amount of crystalline sodium chloride to 5–10 mL of the test solution.

Highly acid solutions (pH < 2) must be buffered to a pH of 2–7 with crystalline sodium acetate. Concentrated cobalt (II) ions must be diluted so that the cobalt (II) content comes within the limits of the color scale. The dilution factor must be taken into account when calculating the cobalt (II) content.

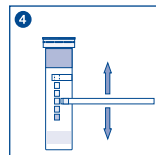
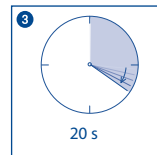
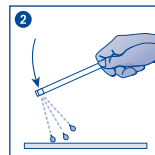
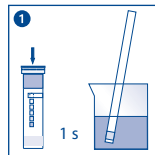
Disposal:

Used test strips can be placed in the normal household waste.

Storage:

Avoid exposing the strips to sunlight and moisture. Keep container cool and dry (storage temperature not above +30 °C).

If correctly stored, the test strips may be used until the use-by-date printed on the packaging.



Product data and ordering information

Type	Semi-quantitative test strips
Presentation	Tube of 100 test strips
Color reaction	white to green-blue
Gradation	0 · 10 · 25 · 50 · 100 · 250 · 500 · 1000 mg/l (ppm) Co^{2+}
REF	91303