

# SALTESMO

## Test paper for the semi-quantitative determination of chloride, bromide and iodide

SALTESMO is especially suitable for quick checks on halogen ion concentrations. Defined concentrations can be quickly checked and it can easily be determined whether the claimed concentration is accurate.

### Colour reaction:

SALTESMO reacts with chloride, bromide and iodide changing colour from red-brown to yellow. The size of the faded (yellow) circle is proportional to the total concentration of chloride, bromide and iodide.

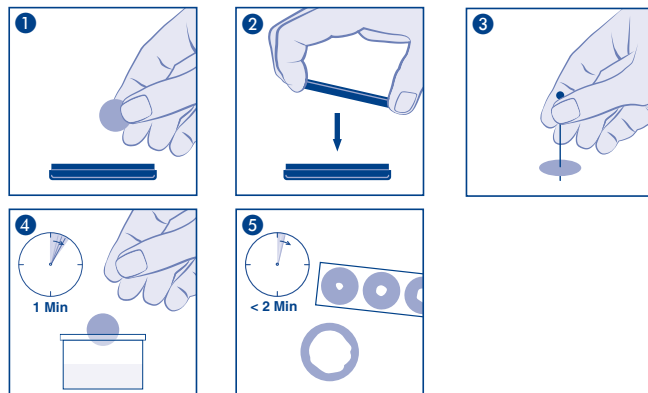
### Instructions for use:

1. Remove one test disc.
2. **Immediately replace lid** to protect the remaining discs from light.
3. Perforate the disc **exactly in the middle** with the pin supplied.
4. Immerse the test paper into the solution to be examined for 1 minute.
5. Not later than 2 minutes the disc is saturated remove the disc from the test mixture and compare the size of the faded (yellow) area with the reference scale.

The concentration can be read off in g/L of NaCl, KCl, NaBr or KI.

When the concentrations exceed those given on the reference scale, the test mixture should be diluted with distilled water and obviously this dilution has to be taken into consideration when calculating the concentration.

Fluoride ions are not determined.



CTL SCIENTIFIC SUPPLY CORP. 1016-3 Grand Boulevard, Deer Park, NY 11729

Tel: 631-242-4249

Web: [www.ctlscientific.com](http://www.ctlscientific.com)

Manufacturer: Macherey-Nagel GmbH & CO. KG

Rev: 2025-03